

## X-ray Inspection Machine HNX-560/665



### High-precision sensor

With high-precision X-ray linear sensor, image of 300μm size of foreign object can be taken.  
Note: It may show unclear image, depends on the inspected material

### Ultrafast Processor

To process large volume of images at high speed, quipped with the 64bit ultrafast CPU (Corei7) and the large capacity memory of 8GB which doubles the processing capabilities.  
(This spec may be changed without any notifications)

### Dual Monitors

2 monitors are included as standard equipment. During the inspection, up to 6 images can be displayed at a time.

### Full-color Display

Full-color inspection screens make the detection of foreign object easier.

### Adjustable-speed Photographing

Photographing speed can be adjusted for each products.

### Memory Function

Setup condition for each product class (X-ray intensity, screen setting, auto detection, conveyor speed image range) and images can be saved to the memory. (up to 30 products classes)

### Traceability

All image data are saved and the matching label for each product can be printed out with the optional label printer. Images can be color printed. Also, via computer network, images can be transferred.

### Simple Measuring Function

To minimize oversight, X-ray image automatically assists the operator in detection foreign objects. (it doesn't ensure 100% detection)

### Simple Foreign Objects Auto Detection Function

Using the scanned image, the distance between 2 points on the belt can be simply measured.

### Multi langrage Display

Come equipped with Japanese, English, and Chinese display.

### Safety-sensitive Design

To protect the operator from X-ray exposure, equipped with sufficient safety measure.

### Large size LCD Display

In addition to the 2 screens, large size LCD on the main body also shows the operation condition, availability etc.

### X-ray Protection Function

For the longer operating life of X-ray tube, "Auto aging" and "Auto cooling" functions save the X-ray, and X-ray dosage is controlled during each inspection.

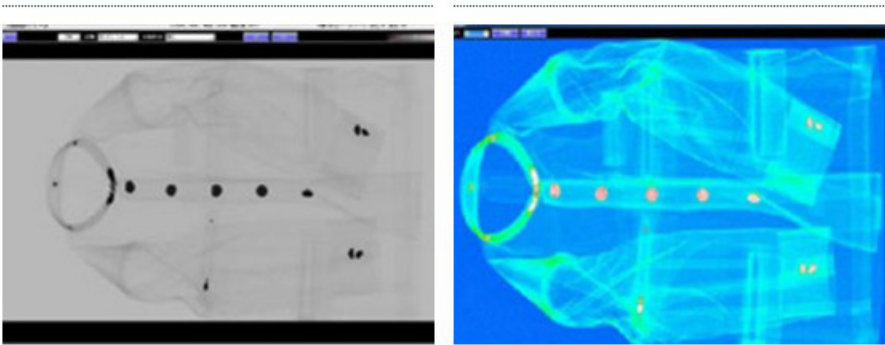
### Inspecting Direction

Products can be put in from both sides. (Right or Left) required setting.)

### Energy saving function

Depending on the operation aspect, automatically control and reduce power consumption.

## X-ray Inspection Machine HNX-560/665



Model	HNX-560	HNX-650
Angle	0° (Single Direction)	
Belt Width (mm)	660	
Belt Speed	10m/min   15m/min   20m/min   (Adjustable)	
Inspecting Direction	Right/Left (Adjustable)	
Max Object Size	Length = 520~1,400mm	
Tunnel Size	665 (W) ×300 (H)	
Max Object Weight	30kg	
Safety Sensor	Avaiable	
Minimum Imaging Ability	FeΦ0.3mm / SUS (wire) φ0.2 x 5mm (SUS304:7.93g/cm <sup>3</sup> ) or Above	
Line Sensor	High Resolution Straight type (dual monitor)	
Line Sensor Pixels	1408 Pixels	1664 Pixels
Sensor Width	563.2mm	665.6mm
X-ray Tube Voltage	30~80kV	
X-ray Tube Current	0~3mA	
LCD Size	23inch (Dual Monitor)	
LCD Pixels	1920×1200	
OS	Windows7 (64Bit)	
Memory	8 G B	
HDD	2 T B	
Photofraphing Condition	30 Categories	
Picture Contrast	Standard	
Picture Sharpness	Standard	
Picture Zoom	0.4 - 16times zoom	
Picture Printing Function	Standard	
Inspected Label	Option (Company name, Lot #,etc.)	
Picture Saving	Product Informations are saved for traseability	
Picture Saving Format	TIFF／BMP／JPEG	
Auto Object Judgement System	Standard	
Dimenstions	2130×990×1745mm(H)	
Output Voltage	A C 90~240 V   50/60 Hz	
Leakage Dose	Less than 1μSv/h	
Power Consumption	0.8kVA	
Required Operating Temperature	5~35℃	
Required Operating Humidity	20~80%RH	
Machine Weight	620kg	
Options	Touch Panel, Roller Conveyor, PC Printer, Label rinter	

This specification is changed without any notifications